

What You should do.

Contact **Plan for Work** if you are receiving SSDI and/or SSI benefits and want to work.

If you want our help ...

Call us at 503-243-2081 x227 or 1-800-452-1694 x227 / Fax: 1-503-243-1738 and an Information Specialist will assist you in applying for our services.



**Helping people
make informed
choices about
working**



DISABILITY RIGHTS OREGON

**Plan for Work is a project of
Disability Rights Oregon**

Find us on the web at:

www.droregon.org

610 SW Broadway, Suite 200
Portland, OR 97205

Phone: 503-243-2081 Fax: 503-243-1738

E-mail: pfw@droregon.org

This project receives funding from the Social Security Administration under grant (6 WIP13050316-01-01). Social Security has reviewed the following publication for technical accuracy only; this should not be considered an official Social Security document.

**GET HELP
UNDERSTANDING
HOW WORK
AFFECTS SSDI
AND SSI**



**WORK INCENTIVES
PLANNING AND
ASSISTANCE FOR
OREGON AND
SOUTHERN WASHINGTON**

WORK INCENTIVE PLANNING AND ASSISTANCE

If you are a Social Security disability beneficiary and would like to know how work will affect your benefits, we can provide information about work incentives to help you make informed decisions about work.

Plan for Work services are for you if you ...

- Have a disability
- Are receiving Social Security Disability Insurance (SSDI), and/or
- Are receiving Supplemental Security Income (SSI), and
- Want to know how work will affect your benefits and services

Plan for Work services are available to people who are ...

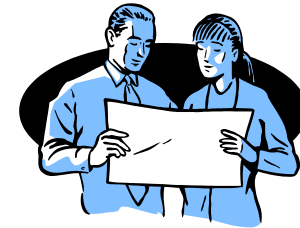
- Currently working, or
- Just thinking about going to work
- Live in Oregon or Washington's southern counties of Benton, Clark, Cowlitz, Franklin, Klickitat, Lewis, Pacific, Skamania, Wahkiakum, and Walla Walla

Our goal is to enable SSDI or SSI beneficiaries to make informed choices about work and to support them in making a successful transition to self-sufficiency.

Our trained Community Work Incentives Coordinators will offer guidance through the following services:

- **Information and Referral** - Information about work incentives and/or referral to other agencies or employment networks.
- **Benefits Analysis** - Explanations of work incentives and worksheets showing benefits, work, expenses, etc.
- **Work Incentive Planning** - The development of a customized Work Incentive Plan through discussions, information, and worksheets that will assist beneficiaries in becoming self-sufficient.
- **Benefits Management** - Periodic adjustments and information to assist in maintaining work and moving toward self-sufficiency.

Social Security's Work Incentives Can Help Beneficiaries Return to Work



WHAT ARE WORK INCENTIVES?

Social Security work incentives are regulations that make it possible for people who receive disability benefits to work without losing their benefits until they become self-supporting.

There are different rules for SSI and SSDI, yet both programs have conditions that allow a person time to test his or her ability to work without losing money and health coverage.

If your benefits end because of your work and you have to stop working later, work incentives can make it easy to begin receiving benefits again.